

TOWN OF WATERFORD

Sanitary District No. 1

**LIFT STATION
UPGRADES
PUBLIC HEARING
OCTOBER 9, 2024**

Dave Arnott, Ruekert & Mielke, Inc.



Topics Covered

TOWN OF WATERFORD *Sanitary District No. 1*

- Background
- Project Components
- Consequences of Not Doing Project
- Schedule
- Cost and Financial Impact



Background

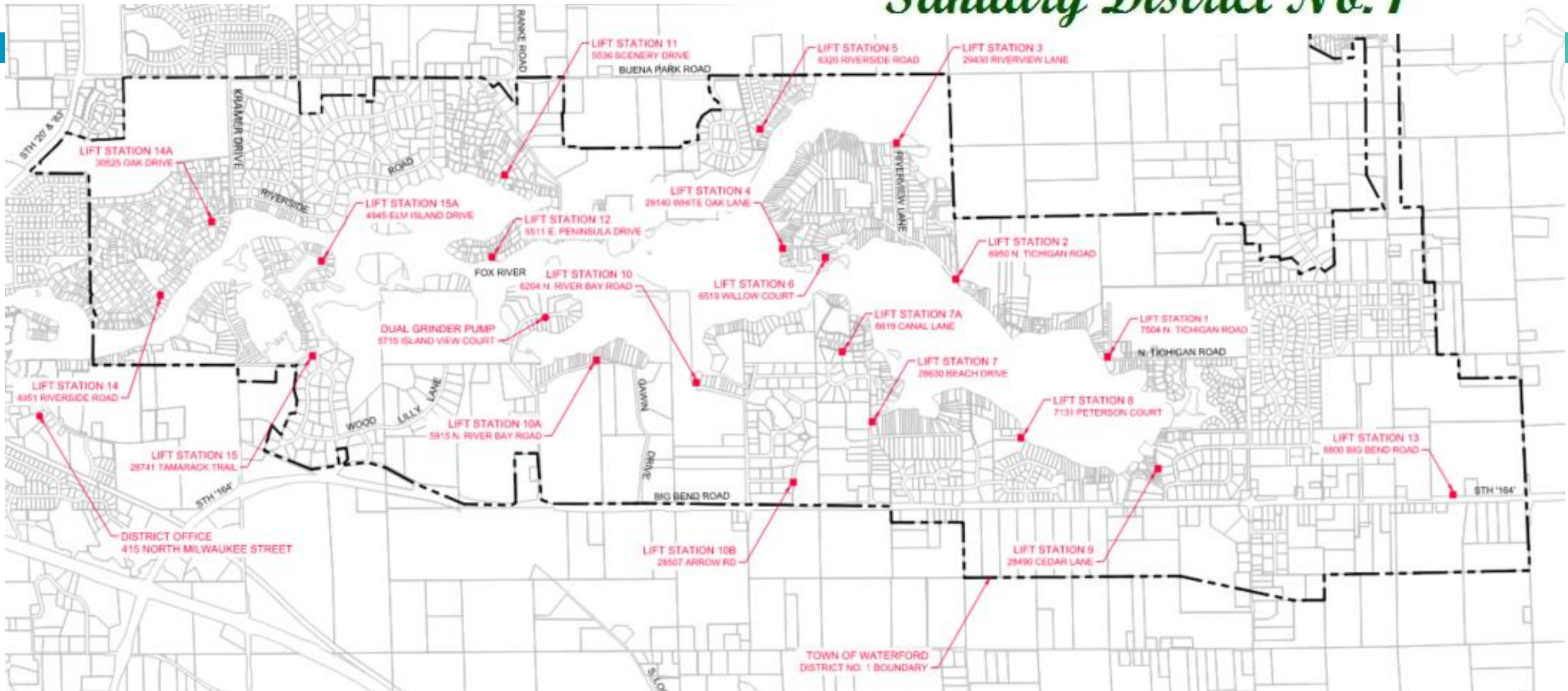
TOWN OF WATERFORD *Sanitary District No. 1*

- Waterford SD Discharges to Western Racine County Treatment Facility
 - Gravity Sewers
 - Lift Stations and Force Mains
 - 20 Lift Stations
 - Grinder Pumps
 - District Owned
 - Privately Owned
 - Pressure Sewers
 - Discharge to Gravity System
 - Discharge to Force Main
- Initial System Constructed in 1988
- Minor upgrades made with time



Background

TOWN OF WATERFORD *Sanitary District No. 1*



Background

TOWN OF WATERFORD *Sanitary District No. 1*

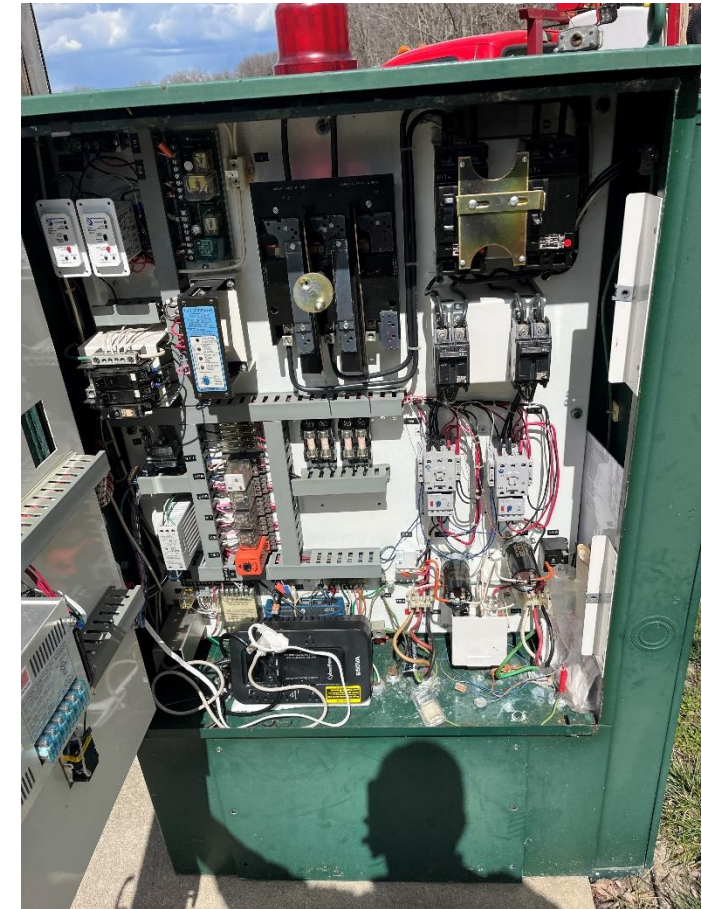
- District Needs To Position Itself to Serve Residents For Future
- Accommodate Minor Development / Infill
- Improve Capacity
- Upgrade Aging Facilities at Lift Stations
 - Standby Generators
 - Pumps
 - Pump Controls
 - SCADA and Telemetry (Control and Monitoring System)
- Improve Emergency Operations



Background - Studies

TOWN OF WATERFORD
Sanitary District No. 1

- Sanitary Sewer Capacity Study Completed in 2023
 - Gravity Sewers – No Major Changes
 - Grinder Pumps – No Major Changes
 - Pressure Sewers – No Major Changes
 - Lift Station – Major Upgrades Required
 - Capacity Improvements Needed At Lift Stations 1, 2, 6, 10 and 15.
 - District Still Addressing Clear Water Into Sewer System
 - Force Mains – No Major Changes



Background - Studies

- Lift Station Upgrade Study Completed in 2024
 - Addressed *How* Lift Stations With Needed Capacity Will Be Upgraded
 - Required By WDNR For Clean Water Fund Program
 - Low Interest Loan Program
 - Identified Need For Additional Standby Generators, Improve Resilience of System
 - Lift Stations 5, 7, 8, 9,11,12,14,14A
 - Presently Use Portable Generators
 - Limited By Equipment and Labor

Project Components

TOWN OF WATERFORD
Sanitary District No. 1

- Additional Pumping Rates
 - Lift Stations 1, 2, 6, 10 and 15
- New Buildings
 - Lift Stations 6, 10 and 15
 - Larger Generators
 - Meeting Electrical Code Requirements
- Wet Well and Valve Manhole Piping and Valve Replacement
 - At Select Stations Where Needed
- Painting
 - At Select Stations Where Needed



Project Components

TOWN OF WATERFORD
Sanitary District No. 1

- Standby Generator Replacement
 - Lift Stations 6, 10 and 15
- Standby Generator and Automatic Transfer Switch Addition
 - Lift Stations 5, 8, 11, 12, 14, 14A
- Pump Control Panel Replacements
 - All Lift Stations
- SCADA and Telemetry at Main District Headquarters
- Site Drainage – Stations 10 and 15.



Consequences of Not Doing Project

TOWN OF WATERFORD *Sanitary District No. 1*

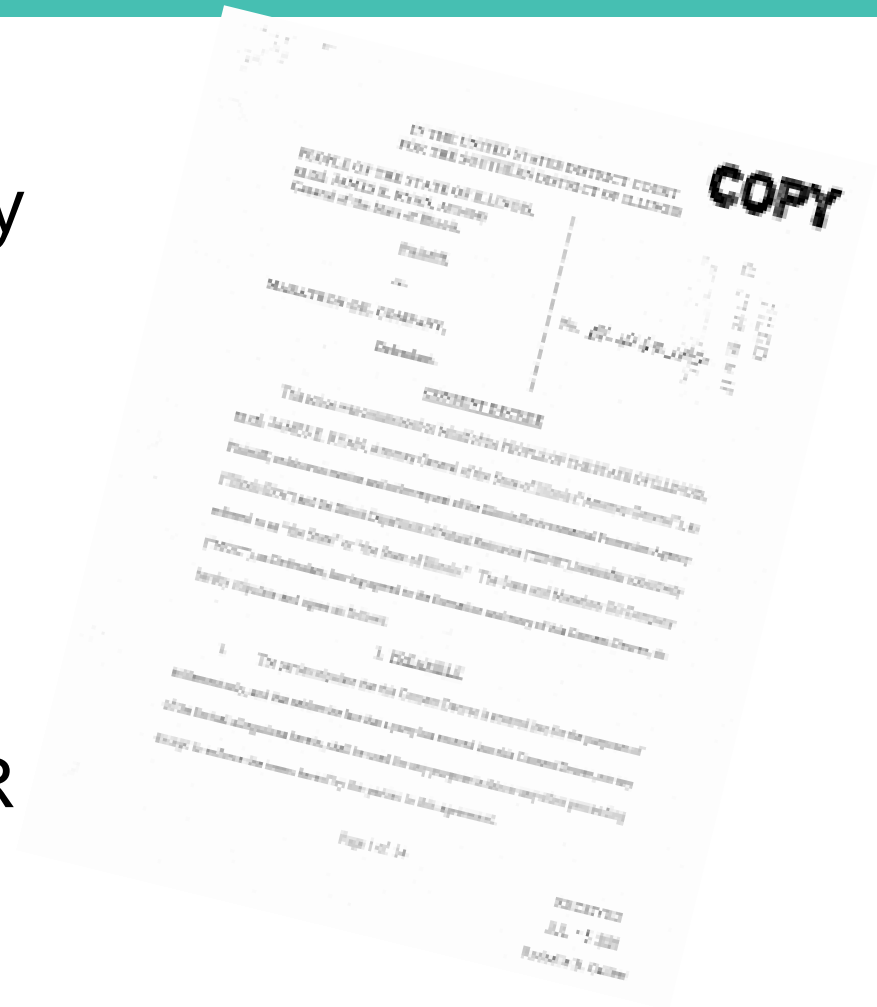
- ❑ Possible Basement Backups
- ❑ Possible Sanitary Sewer Overflows
- ❑ Decreased Emergency Response Operations
- ❑ Decreased Monitoring/Control of System



Consequences of Not Doing Project

TOWN OF WATERFORD
Sanitary District No. 1

- District Forced to Do Project In Future by WDNR
 - Consent Decree
 - Moratorium on Development
 - More Costly
 - Reduced Low-Interest Loan Capacity of WDNR, Federal BIL, Additional \$ to WDNR to Support Needed Projects



Project Schedule

TOWN OF WATERFORD *Sanitary District No. 1*

- WDNR Approval of Plans and Specifications – November 30, 2024
- Public Bidding – January 31, 2025
- Award Project – February, 2025
- Start Construction – April, 2025
- Milestone 1 – August 1, 2026
- Complete Construction – October 15, 2027



Financial Summary

- Estimated Project Cost - \$8,538,000
- Wisconsin DNR Clean Water Fund To Be Used
 - State Revolving Loan Program
 - Can Get Up to 55% of Market Interest Rate
 - 20-Year Loan
 - Additional Loan Capacity From Federal Bipartisan Infrastructure Law
 - Grant Possible, But Not Likely



WISCONSIN
DEPARTMENT OF
NATURAL RESOURCES

Financial Summary **TOWN OF WATERFORD**

Rate Impact *Sanitary District No. 1*

- Current Typical Annual User Rate - \$614
- Estimated Typical Annual User Rate In 2027 After Project - \$900-\$1,000
- Rates To be Raised Incrementally in 2025, 2026 and 2027
- District Accountant Involved With Project

